

516 Bradley Street
Watertown, New York 13601
aubertinecurrier.com

Phone: (315)782-2005
Fax: (315)782-1472

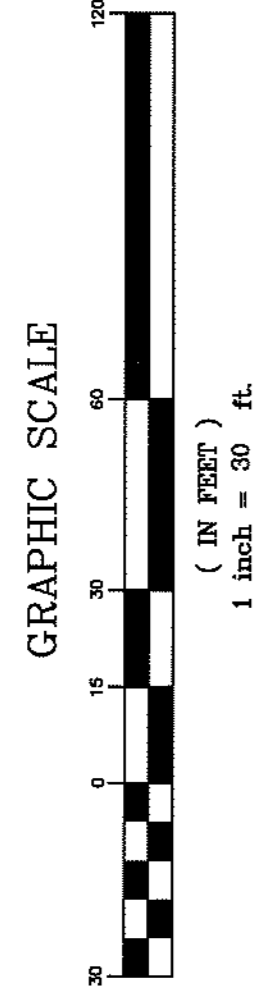
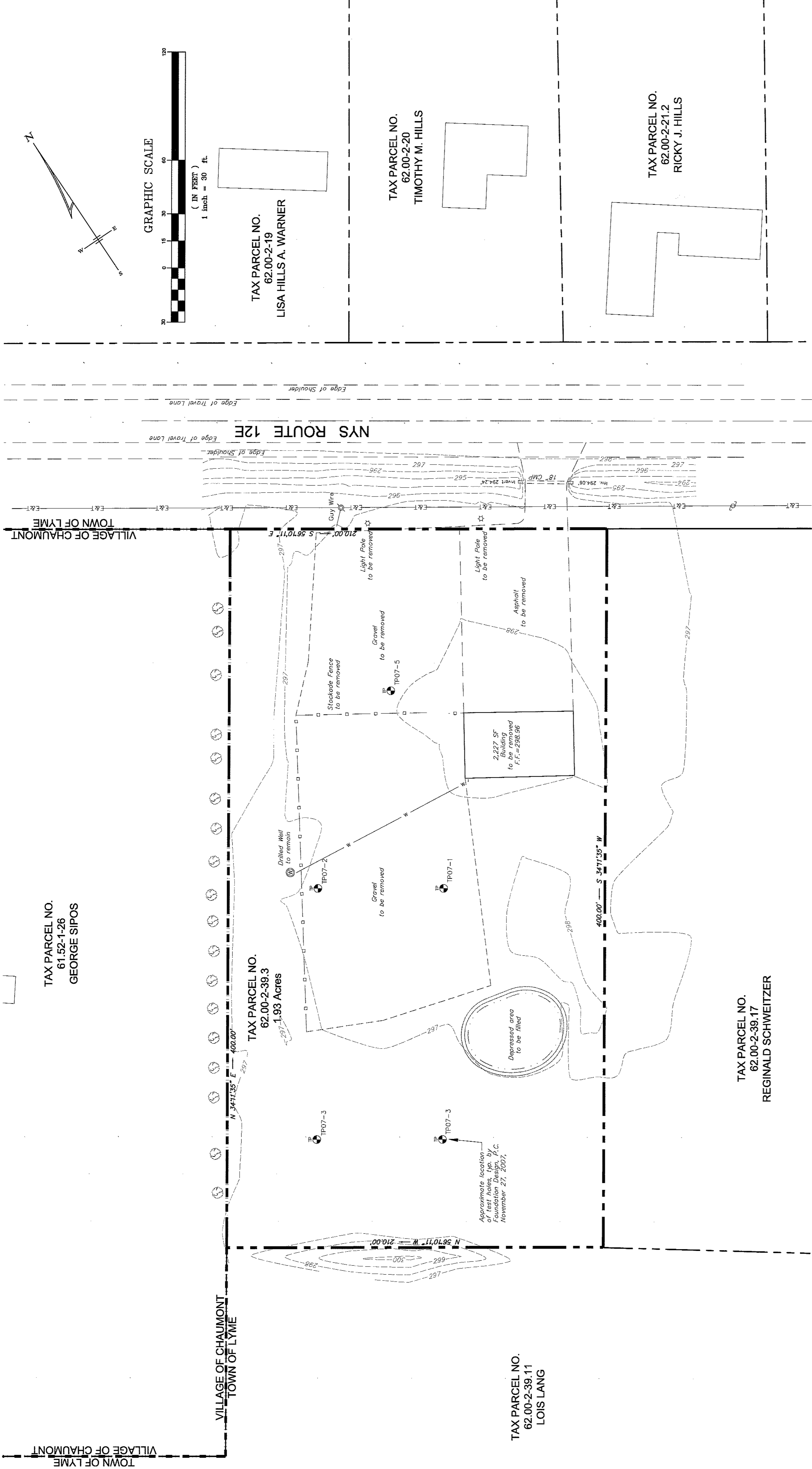
The above Architect, Engineer or Land Surveyor shall be held to the best of his or her knowledge, information and belief, to be a duly licensed professional under the laws of the State of New York. This document is a public record and is subject to the provisions of the New York State Freedom of Information Law. It is a violation of the New York State Law for any person, unless acting under the express written authorization of the Architect, Engineer or Land Surveyor, to reproduce, disseminate, or otherwise use this document in any way. If altered, such licensee shall file the original and the modification "as-is" with the State Office of General Services, © COPYRIGHT 2007, AUBERTINE and CURRIER ARCHITECTS, ENGINEERS & LAND SURVEYORS, PLLC



DOLLAR GENERAL
OWNER: SEANCONY, L.P.
12644 NYS ROUTE 12E
TOWN OF LYME
JEFFERSON COUNTY, STATE OF NEW YORK

PROJECT NO.: 2009-03
SCALE: 1"=30'
DRAWN BY: TTT
CHECKED BY: MMW
ISSUE DATES:
05/20/2009

EXISTING CONDITIONS
PLAN



LEGEND	EXISTING	PROPOSED
5' CONTOUR	---	---
1' CONTOUR	---	---
PROPERTY LINE	---	---
RIGHT OF WAY	---	---
SETBACK	---	---
ZONING LINE	---	---
BUILDING	---	---
ASPHALT PAVEMENT	---	---
EDGE OF GRAVEL	---	---
CURB	---	---
SIDEWALK	---	---
TREE LINE	---	---
FENCE	---	---
STREAM/WATER	---	---
WATERLINE	---	---
SANITARY SEWER	---	---
SEWER FORCE MAIN	---	---
STORM SEWER	---	---
FOUNDATION DRAIN	---	---
OVERHEAD UTILITY	---	---
UNDERGROUND UTILITY	---	---
ELECTRIC	---	---
TELEPHONE	---	---
GAS	---	---
SANITARY MANHOLE	---	---
STORM MANHOLE	---	---
CATCH BASIN	---	---
FIRE HYDRANT	---	---
WATER VALVE	---	---
CURB STOP	---	---
UTILITY POLE	---	---
ELECTRIC MANHOLE	---	---
TELEPHONE MANHOLE	---	---
GAS VALVE	---	---
LIGHT POLE	---	---
PERC TEST	---	---
TEST HOLE	---	---