



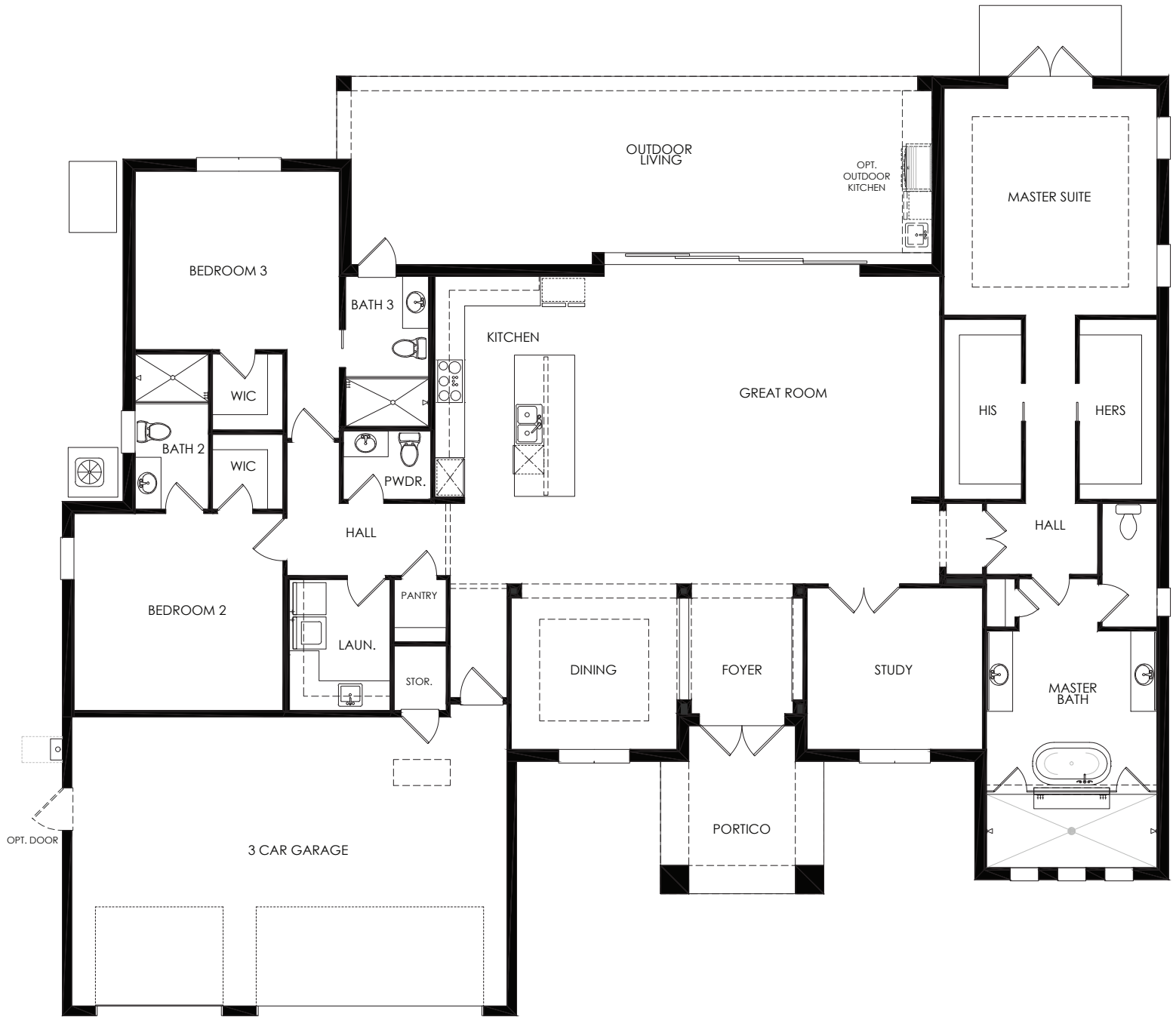
MONARCH

BUILDERS & REMODELERS



AZALEA MODEL

Three Bedroom, Three and One Half Bathroom,
Great Room Dining, Study, Outdoor Living, Three Car Garage



LIVING AREA	2,989 SQ.FT.
PORTICO	126 SQ.FT.
OUTDOOR LIVING	548 SQ.FT.
GARAGE	675 SQ.FT.
TOTAL AREA	4,338 SQ.FT.

AZALEA MODEL

Three Bedroom, Three & One Half Bathroom,
Great Room, Dining, Study,
Outdoor Living, Three Car Garage